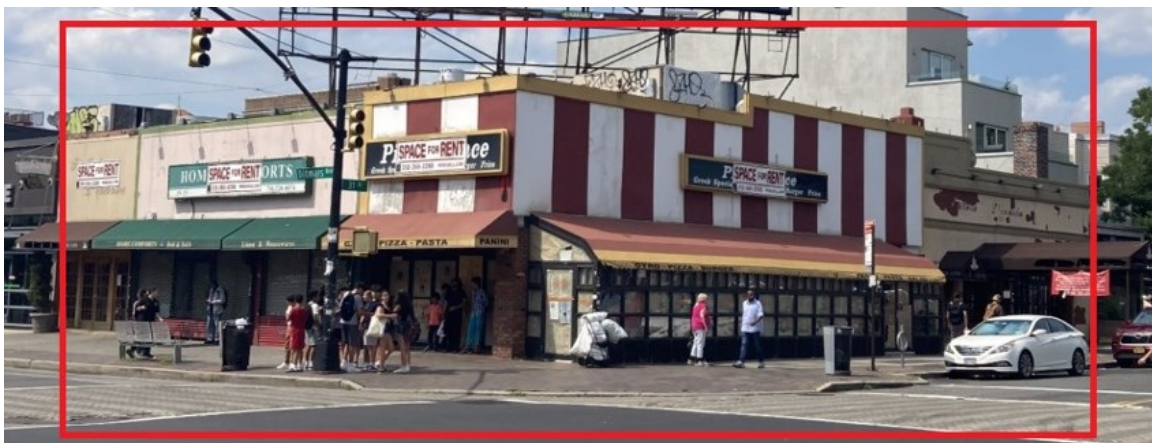


SOLIL MANAGEMENT

29-21 DITMARS BOULEVARD

NORTHWEST CORNER OF 31ST STREET
ASTORIA, NY



SIZE:

GROUND: APPROX. 8,090 SF

BASEMENT: APPROX. 8,000 SF

CEILING HEIGHT:

APPROX. 10'

FRONTAGE:

200' OF WRAPAROUND FRONTAGE
ON 31ST ST AND DITMARS
BLVD.

CURRENTLY:

VACANT

POSSESSION:

IMMEDIATE

ADDITIONAL INFORMATION :

- AMAZING FREE STANDING CORNER AVAILABLE FOR FIRST TIME IN DECADES
- HIGH FOOT TRAFFIC AREA
- LOCATED NEAR THE N & W TRAINS
- VENTED FOR COOKING



CONTACT INFORMATION:

NICHOLAS FORELLI

(212) 506-0448

NF@SOLIL.COM

WWW.SOLIL.COM

1185 SIXTH AVENUE, 10TH FLOOR, NEW YORK, NY 10036