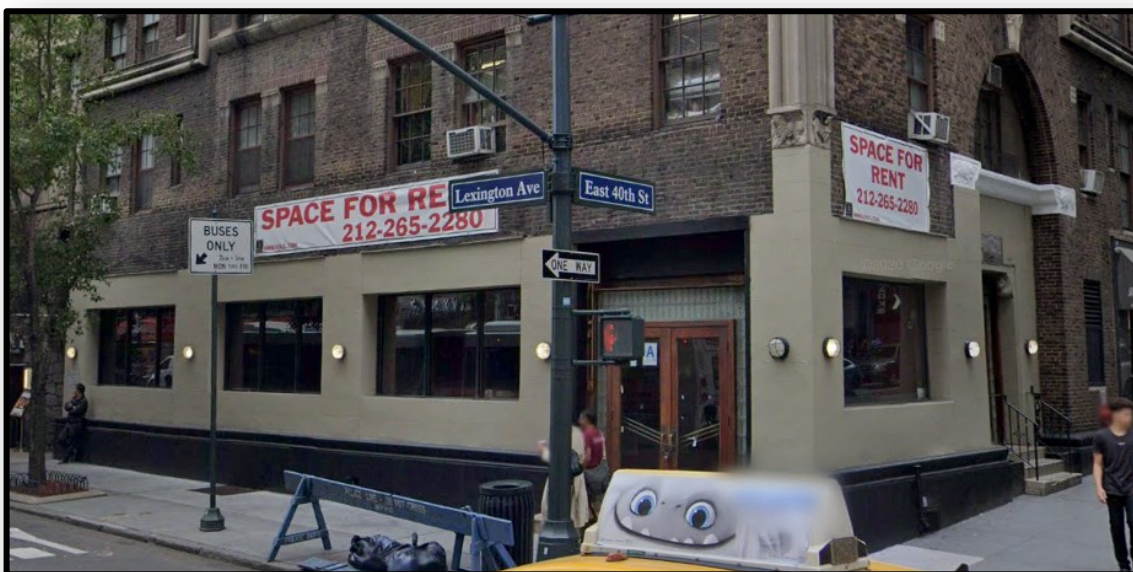


SOLIL MANAGEMENT

124 EAST 40TH STREET

SOUTH WEST CORNER OF LEXINGTON & 40TH
GRAND CENTRAL, NY



SIZE:

GROUND FLOOR
APPROX. 1,800 SF

BASEMENT:
APPROX. 1,000 SF

CEILING HEIGHT:
APPROX. 9 FT

FRONTAGE:
APPROX. 100'
WRAPAROUND

POSSESSION:
ARRANGED

CURRENTLY:
GETIR

ADDITIONAL INFORMATION :

- HIGH FOOT TRAFFIC AREA
- IN CLOSE PROXIMITY TO GRAND CENTRAL STATION AND THE 4, 5, 6, 7, B, D, F, M AND S TRAINS
- WALKING DISTANCE TO GRAND CENTRAL STATION



CONTACT INFORMATION:

NICHOLAS FORELLI
(212) 506-0448
NICHOLASF@SOLIL.COM
WWW.SOLIL.COM