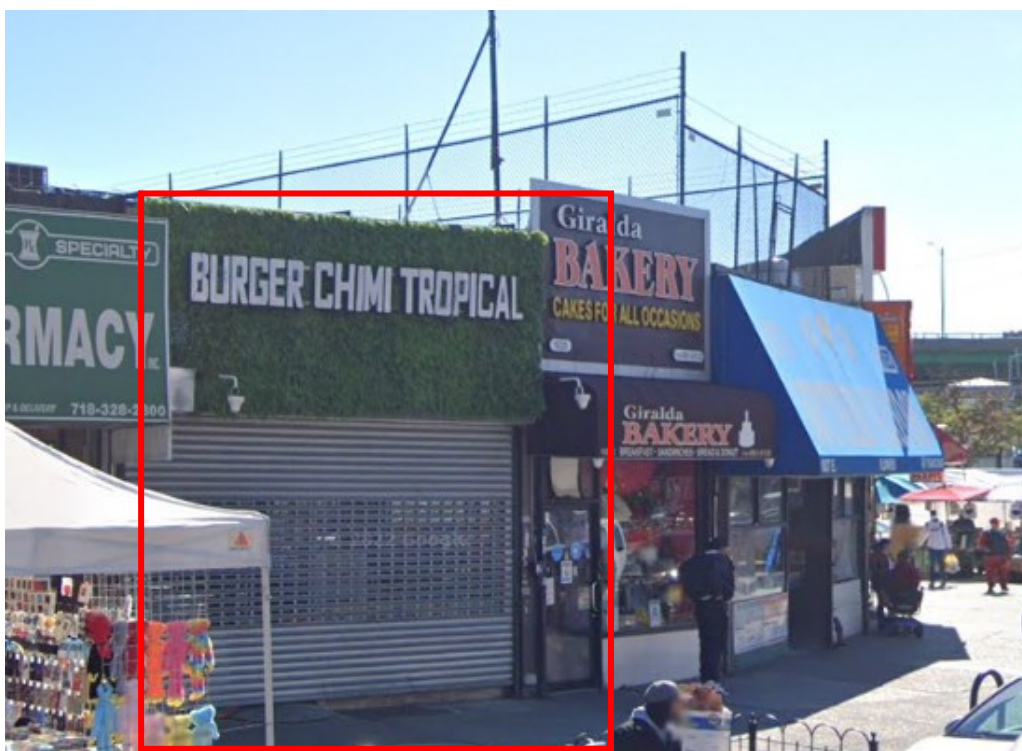


# SOLIL MANAGEMENT

## 940 SOUTHERN BLVD

BETWEEN ALDUS & 168TH STREETS  
BRONX, NY



**SIZE:**

935 SF—  
GROUND FLOOR

**CEILING HEIGHT:**

APPROX. 12 FT

**FRONTAGE:**

APPROX. 11 FT

**CURRENTLY:**

BURGER CHIMI TROPICAL

**POSSESSION:**

ARRANGED

**ADDITIONAL INFORMATION :**

- HIGH FOOT TRAFFIC AREA
- LOCATED NEAR THE 2, 5 & 6 TRAINS



**CONTACT INFORMATION:**

NICHOLAS FORELLI

(212) 506-0448

NF@SOLIL.COM

WWW.SOLIL.COM

1185 SIXTH AVENUE, 10TH FLOOR, NEW YORK, NY 10036