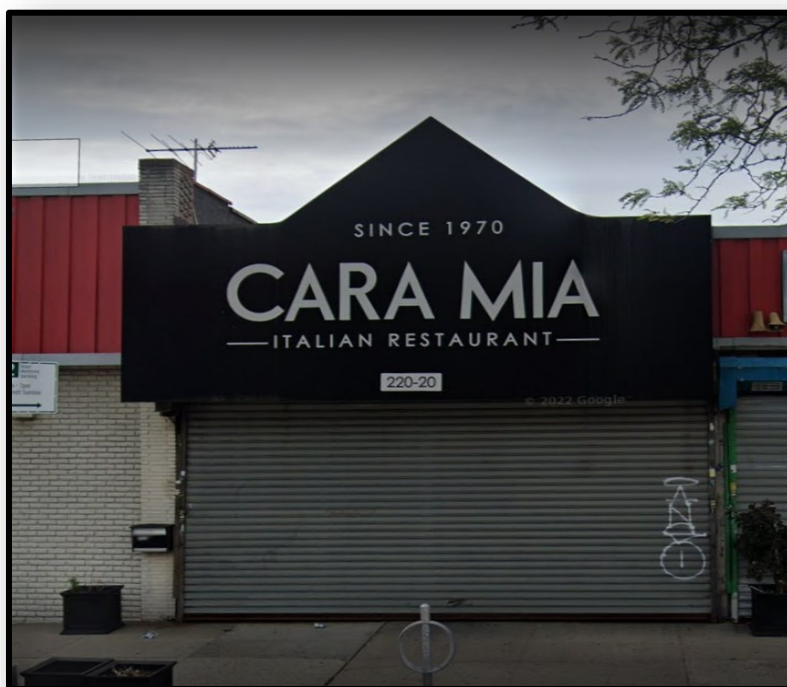


SOLIL MANAGEMENT

220-20 HILLSIDE AVENUE

INTERSECTION OF HILLSIDE & BRADDACK AVENUES
QUEENS VILLAGE, NY



SIZE:

SPACE A: 1,530SF—
GROUND FLOOR

CEILING HEIGHT:

APPROX. 10'

FRONTAGE:

APPROX. 16'

CURRENTLY:

CARA MIA

POSSESSION:

ARRANGED

ADDITIONAL INFORMATION:

- STRONG VEHICULAR TRAFFIC
- PRIME QUEENS VILLAGE RETAIL SPACE
- LOCATED NEAR THE GRAND CENTRAL PARKWAY
- CUSTOMER PARKING LOT



CONTACT INFORMATION:

NICHOLAS FORELLI

(212) 506-0448

NF@SOLIL.COM

WWW.SOLIL.COM

1185 SIXTH AVENUE, 10TH FLOOR, NEW YORK, NY 10036