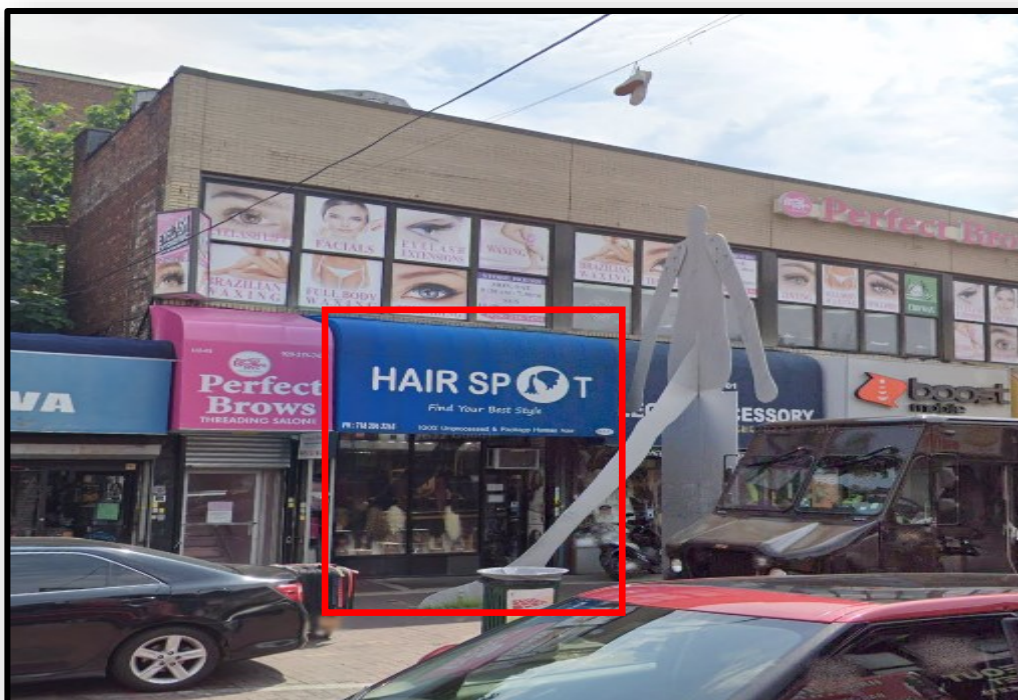


SOLIL MANAGEMENT

165-01 JAMAICA AVENUE

LOCATED ON 165TH STREET BETWEEN JAMAICA & 89TH AVENUE
JAMAICA, NY



SIZE:
228 SF
GROUND FLOOR

CEILING HEIGHT:
APPROX. 10 FT

FRONTAGE:
APPROX. 12 FT

CURRENTLY:
HAIR SPOT

POSSESSION:
ARRANGED

ADDITIONAL INFORMATION :

- HIGH FOOT TRAFFIC AREA
- LOCATED NEAR THE E, F, J & Z TRAINS
- PRIME JAMAICA AVENUE RETAIL SPACE



CONTACT INFORMATION:

NICHOLAS FORELLI
(212) 506-0448
NF@SOLIL.COM
WWW.SOLIL.COM

1185 SIXTH AVENUE, 10TH FLOOR, NEW YORK, NY 10036