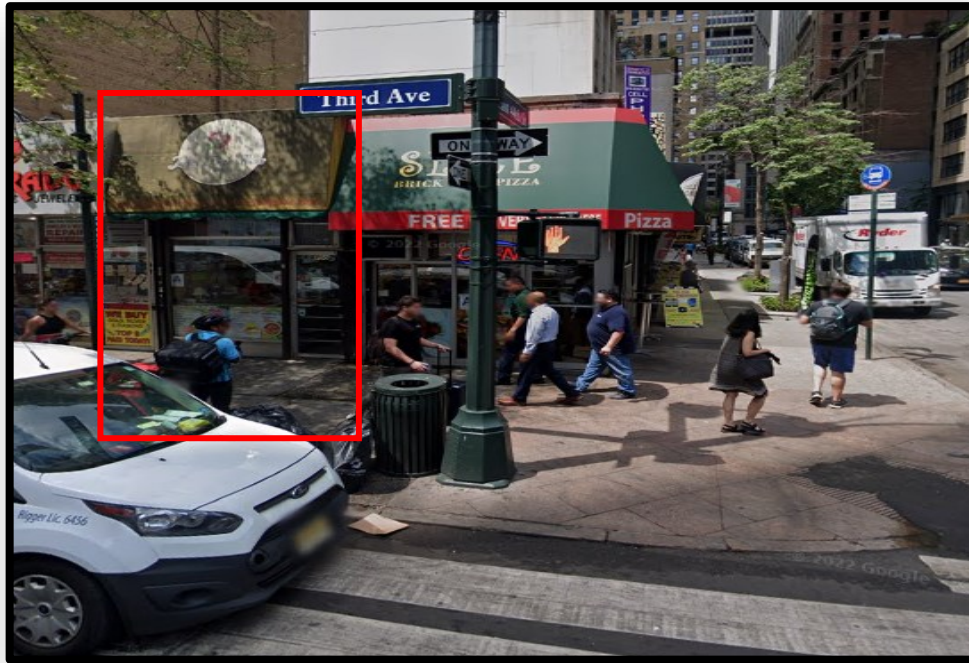


SOLIL MANAGEMENT

698-700 THIRD AVENUE
AKA 160-168 EAST 44TH STREET
BETWEEN 43RD & 44TH STREETS
GRAND CENTRAL, NY



SIZE:

228 SF—
GROUND FLOOR

CEILING HEIGHTS:
APPROX. 9 FT

FRONTAGE:
APPROX. 9 FT

CURRENTLY:
JUICE BAR PLUS

POSSESSION:
ARRANGED

ADDITIONAL INFORMATION :

- HIGH FOOT TRAFFIC AREA
- STEPS FROM GRAND CENTRAL TERMINAL
- LOCATED NEAR THE 4, 5, 6, & 7 TRAINS



CONTACT INFORMATION

NICHOLAS FORELLI
(212) 506-0448
NF@SOLIL.COM
WWW.SOLIL.COM

1185 SIXTH AVENUE, 10TH FLOOR, NEW YORK, NY 10036