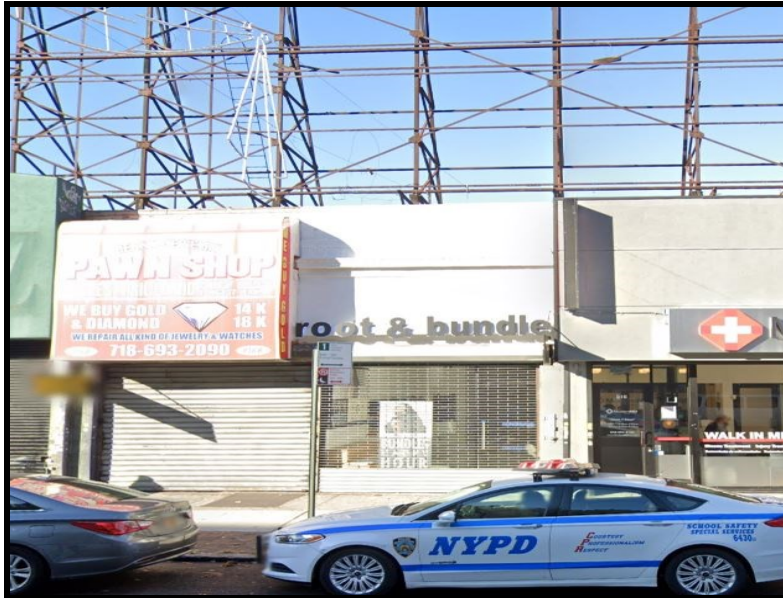


# SOLIL MANAGEMENT

## 918 FLATBUSH AVENUE

BETWEEN CHURCH & SNYDER AVENUES  
FLATBUSH, NY



**SIZE:**  
888 SF—  
GROUND FLOOR

760 SF—  
BASEMENT

**FRONTAGE:**  
15'

**CEILING HEIGHT:**  
12'

**CURRENTLY:**  
ROOT & BUNDLE

**POSSESSION:**  
ARRANGED

**ADDITIONAL INFORMATION:**

- HIGH FOOT TRAFFIC AREA
- PRIME FLATBUSH, BROOKLYN RETAIL SPACE
- LOCATED NEAR THE B, Q, 2 & 5 TRAINS



**CONTACT INFORMATION:**

NICHOLAS FORELLI  
(212) 506-0448  
NF@SOLIL.COM  
WWW.SOLIL.COM

1185 SIXTH AVENUE, 10TH FLOOR, NEW YORK, NY 10036