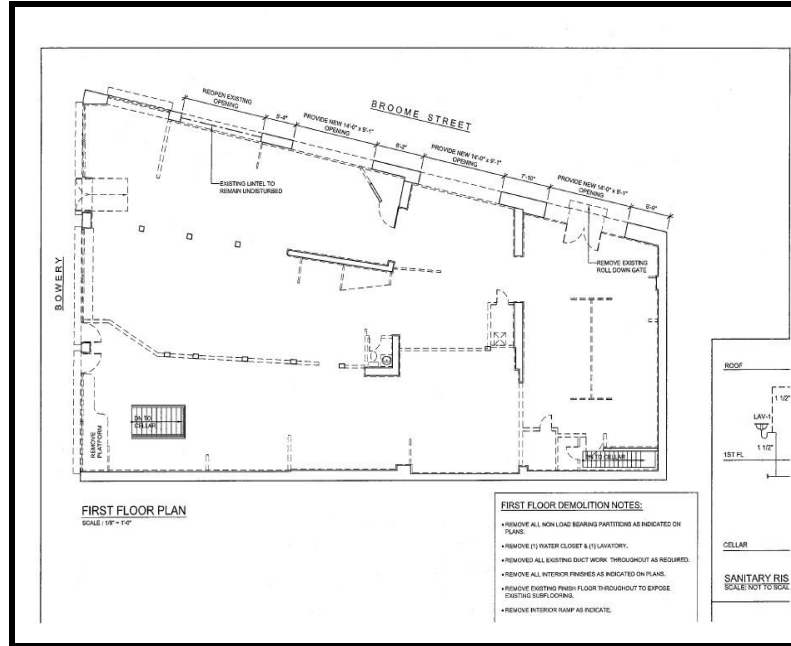


SOLIL MANAGEMENT

150 BOWERY STREET

NORTHWEST CORNER OF BROOME STREET
LOWER MANHATTAN, NY



SIZE:
4,900 SF—
GROUND FLOOR

4,900 SF—
BASEMENT

CEILING HEIGHT:
APPROX. 12'

FRONTAGE:
170' OF WRAP
AROUND FRONTAGE

CURRENTLY:
VACANT

POSSESSION:
IMMEDIATE

ADDITIONAL INFORMATION :

- RARE FREESTANDING CORNER SPACE AVAILABLE
- MULTIPLE ENTRANCES TO THE GROUND FLOOR AND BASEMENT FROM BOTH BOWERY AND BROOME STREET
- LIMITED COLUMNS ON GROUND FLOOR
- LOCATED NEAR THE J, Z, B, D, F, 6, N, R & W TRAINS



CONTACT INFORMATION:

JEREMY MODEST
(212) 506-0448
JM@SOLIL.COM
WWW.SOLIL.COM

1185 SIXTH AVENUE, 10TH FLOOR, NEW YORK, NY 10036