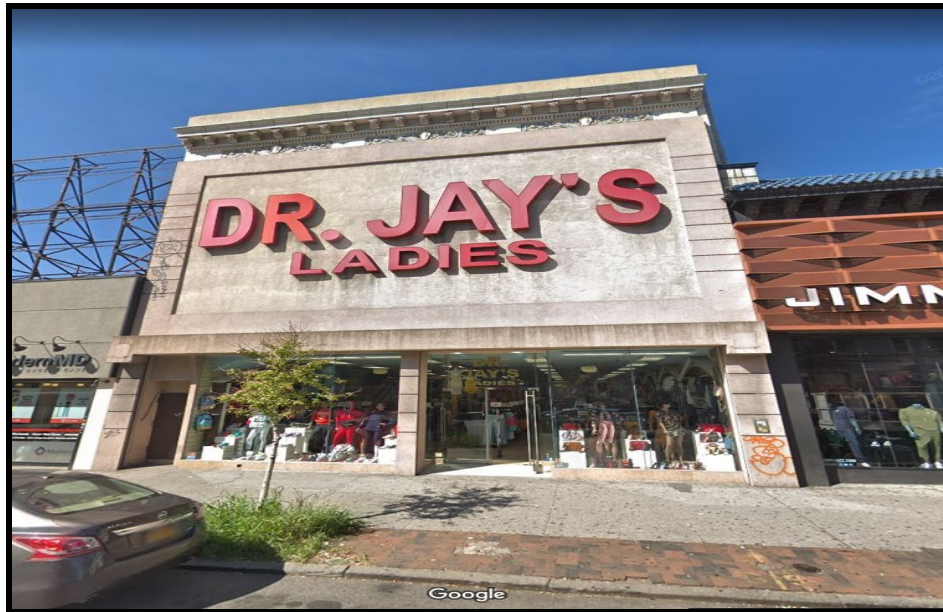


SOLIL MANAGEMENT

912 FLATBUSH AVENUE

BETWEEN CHURCH & SNYDER AVENUES
FLATBUSH, NY



SIZE:

3,150 SF-
FLOORS 1-3

3,111 SF-
BASEMENT

POSSESSION:

IMMEDIATE

CURRENTLY:

VACANT

ADDITIONAL INFORMATION:

- HIGH FOOT TRAFFIC AREA
- PRIME FLATBUSH, BROOKLYN RETAIL SPACE
- LOCATED NEAR THE B, Q, 2 & 5 TRAINS



CONTACT INFORMATION:

JEREMY MODEST

(212) 506-0448

JM@SOLIL.COM

WWW.SOLIL.COM

1185 SIXTH AVENUE, 10TH FLOOR, NEW YORK, NY 10036