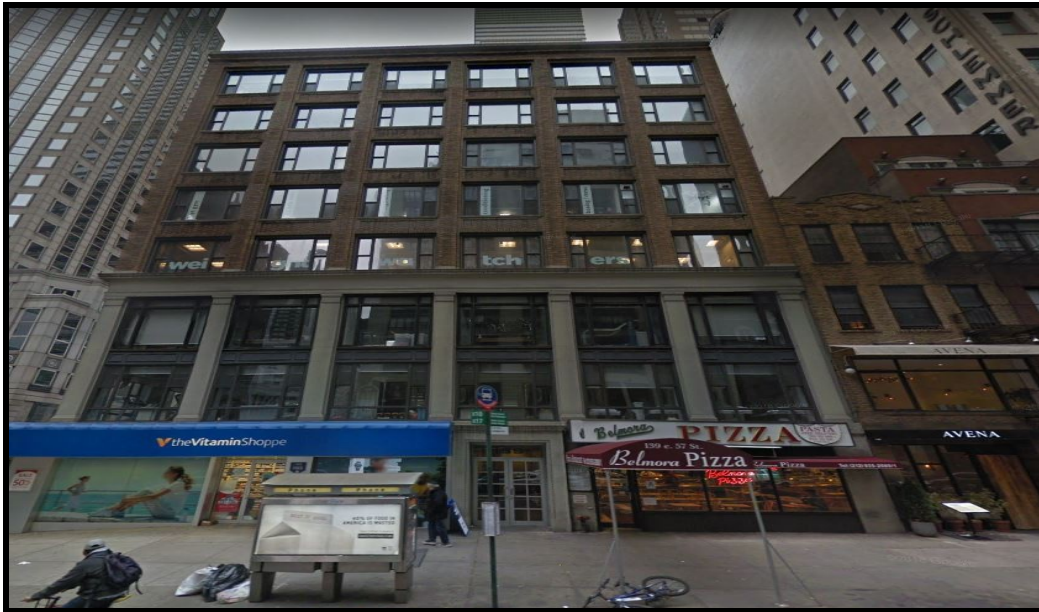


SOLIL MANAGEMENT

139 EAST 57TH STREET

NORTHEAST CORNER OF LEXINGTON & 57TH STREET
MIDTOWN, NY



SIZE:
2,785 SQ FT
6TH FLOOR

POSSESSION:
IMMEDIATE

CURRENTLY:
VACANT

ADDITIONAL INFORMATION:

- HIGH FOOT TRAFFIC AREA
- LOCATED NEAR THE 4, 5, 6, N, R & W TRAINS



CONTACT INFORMATION:

JEREMY MODEST
(212) 506-0448
JM@SOLIL.COM
WWW.SOLIL.COM

1185 SIXTH AVENUE, 10TH FLOOR, NEW YORK, NY 10036